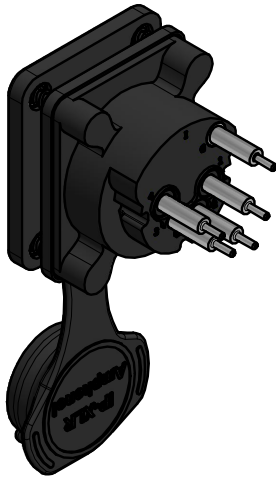
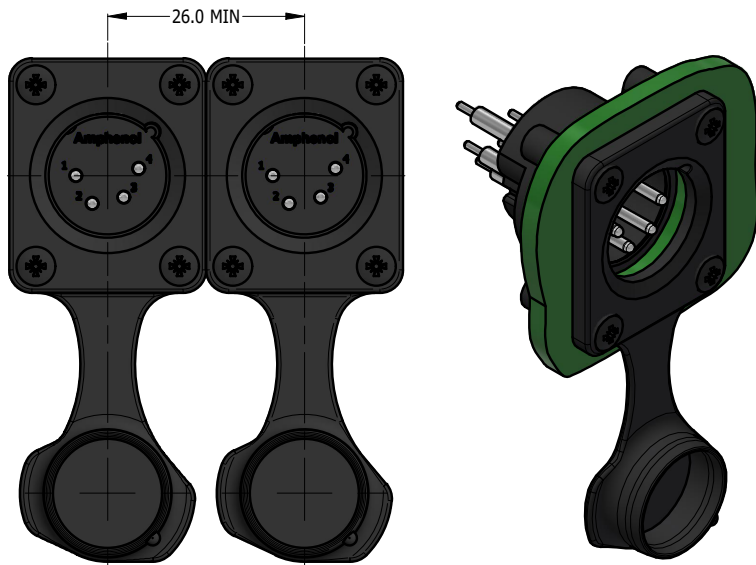
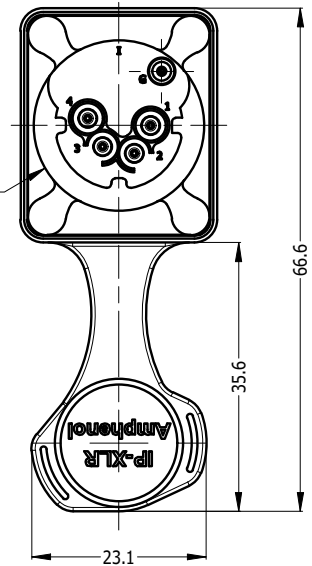
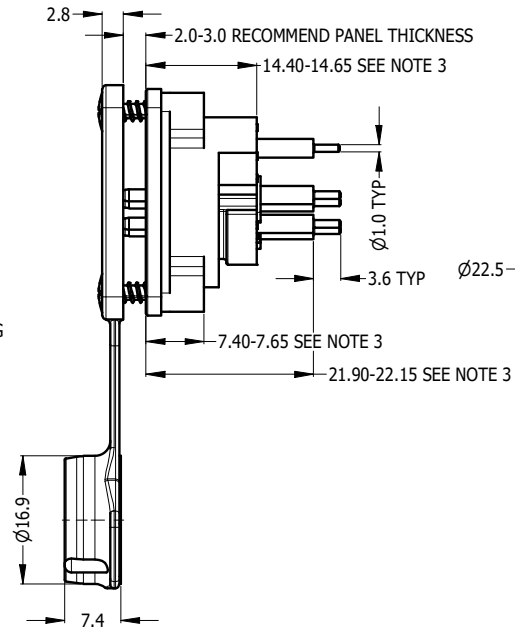
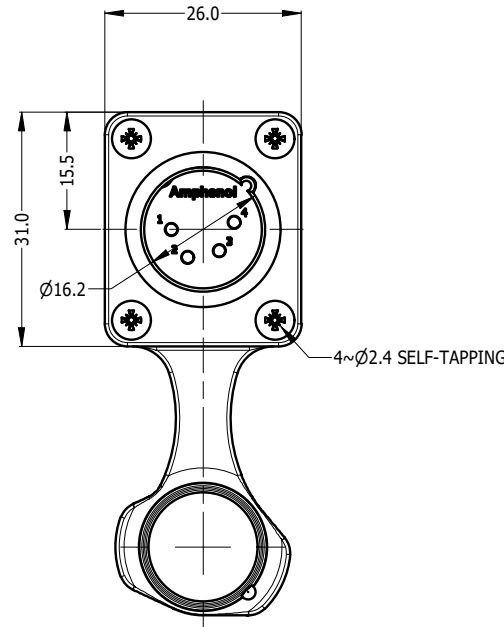


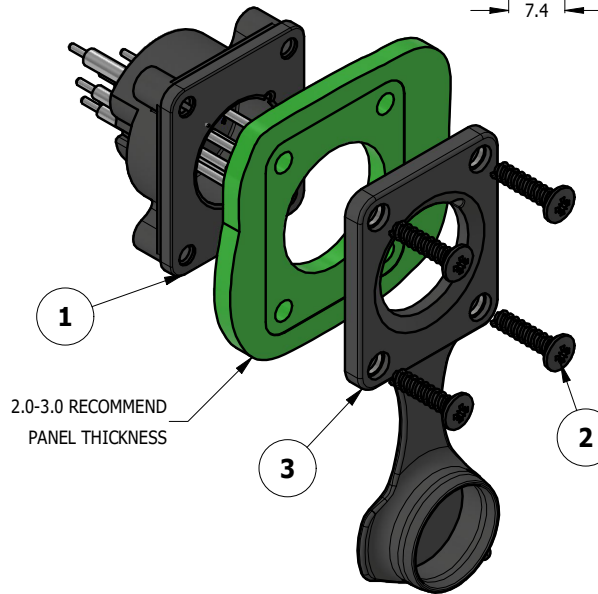
CAPPED VIEW



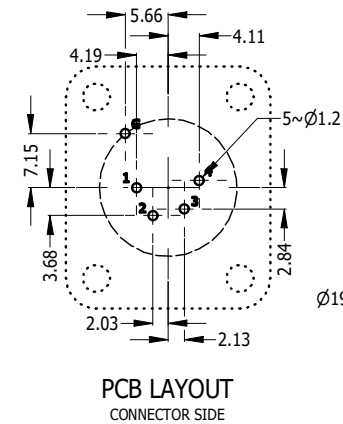
REAR VIEW



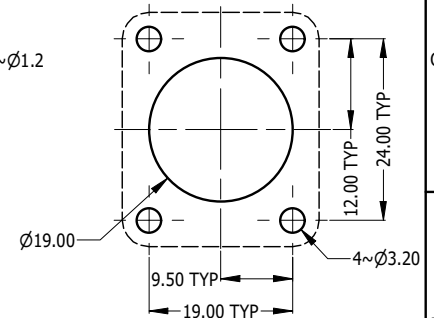
RECOMMEND MINIMUM MOUNTING PITCH



2.0-3.0 RECOMMEND PANEL THICKNESS



PCB LAYOUT
CONNECTOR SIDE



RECOMMEND PANEL CUT OUT

| REVISION HISTORY | | | | |
|------------------|-------------|----------|----|------|
| REV | DESCRIPTION | DATE | BY | ECN |
| 1 | FIRST ISSUE | 11-11-23 | MH | ---- |

- NOTE:
 1. MATING CONNECTOR SHELL TO HAVE MIN 1.6 SURFACE FINISH TO ACHIEVE IP RATING OF THIS CONNECTOR.
 2. BLACK MOUNTING SCREW 52500011-430 x 4 PCS TO BE SUPPLIED WITH THE CONNECTOR, MAX TORQUE 0.5Nm.
 3. DUE TO 0.4mm THICK RUBBER SEAL, THE DIM WILL VARY DEPENDING ON THE SCREWS TIGHTENING IN ASSEMBLY.

| ITEM | PART NUMBER | DESCRIPTION | QTY |
|------|------------------|--|-----|
| 3 | 52730035-000 | AXS FRONT FLANGE D TYPE RUBBER SEAL IP54 WITH CAP | 1 |
| 2 | 52500011-430 | SCREW 2.9 x 1.06mm USED FOR PLASTIC MATERIAL | 4 |
| 1 | 55011500-024/924 | AXS4MP2V WITHOUT RUBBER FLANGE - TIN/GOLD PLATED CONTACT | 1 |

| UNLESS OTHERWISE SPECIFIED TOLERANCE TO BE | |
|--|-------------|
| LINEAR | ANGULAR |
| X ± 0.5 | X' ± 1 |
| X.X ± 0.2 | X.X' ± 30' |
| X.XX ± 0.1 | X.XX" ± 15' |

BREAK ALL SHARP EDGES AND REMOVE ALL BURRS

DO NOT SCALE

THIS DOCUMENT IS THE PROPERTY OF AMPHENOL AUSTRALIA PTY. LTD.
 NO PART THEREOF MAY BE REPRODUCED AND USED WITHOUT THE PRIOR WRITTEN CONSENT OF THE OWNER

| | | |
|-----------------------------------|------------|----------------|
| MATERIAL: SEE COMPONENT | DRN: M.H | DATE: 11-11-23 |
| FINISH: SEE COMPONENT | CKD: M.H | DATE: 11-11-23 |
| | APP'D: P.M | DATE: 11-11-23 |

Amphenol Amphenol Australia Pty.Ltd,
 22 Industry Blvd, Carrum Downs, VIC 3201

TITLE:
**AXS4MP2V
 AXS PANEL MOUNT SERIES
 CUSTOMER DRAWING**

| | |
|--------------------------------------|---------------------|
| PART No. SEE TABLE | SHEET 2/2 |
| DRAWING No. 55011500-824-2 | |

DIMENSIONS IN MILLIMETRES



SCALE: **1:1** SIZE: **A4**

CAD FILE: 55011500824110