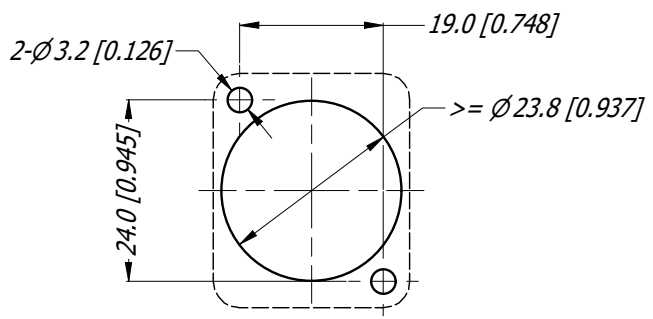
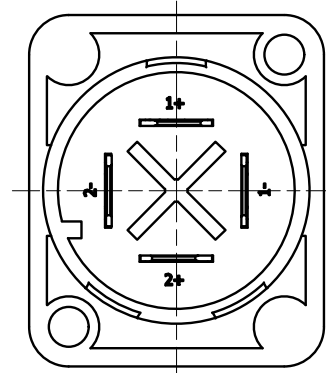
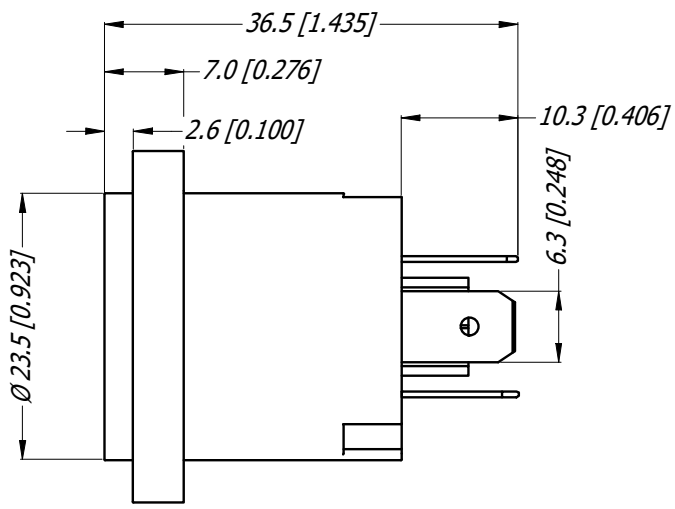
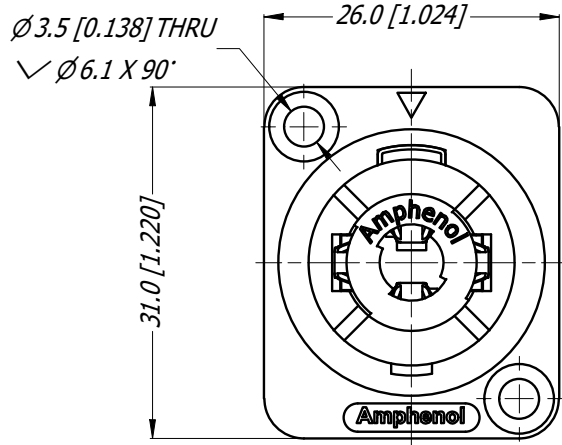
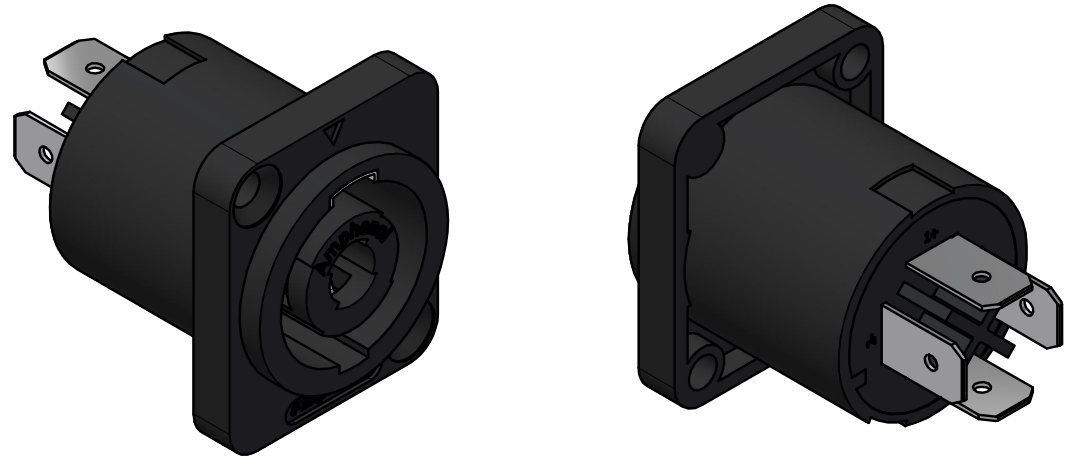


LEGEND  = KEY PRODUCT CHARACTERISTICS

REVISION HISTORY				
REV	DESCRIPTION	BY	DATE	ECN
0	FIRST ISSUE	MH	29-02-16	----
1	ADD Amphenol LOGO TO CENTRE FACE	MH	10-10-22	9707



PANEL CUTOUT (1 : 1)



SP-4-MDQ	Ø3.5 TRHU HOLES	BLACK
SP-4-MDQ-1	Ø3.5 TRHU HOLES	BROWN
SP-4-MDQ-8	Ø3.5 TRHU HOLES	GREY
SP-4-MDQT	Ø2.3 SELF TAPPING HOLES	BLACK
SP-4-MDQT-1	Ø2.3 SELF TAPPING HOLES	BROWN
SP-4-MDQT-8	Ø2.3 SELF TAPPING HOLES	GREY
PART NUMBER	MOUNTING HOLES (mm)	SHELL COLOUR
PART NUMBER TABLE		

UNLESS OTHERWISE SPECIFIED TOLERANCE TO BE		THIS DOCUMENT IS THE PROPERTY OF AMPHENOL AUSTRALIA PTY. LTD. NO PART THEREOF MAY BE REPRODUCED AND USED WITHOUT THE PRIOR WRITTEN CONSENT OF THE OWNER			
LINEAR	ANGULAR	MATERIAL: REFER TO COMPONENTS DRN: MH DATE: 29-02-16 CKD: MH DATE: 10-10-22 APP'D: PM DATE: 10-10-22			
X ± 0.5	X° ± 1				
X.X ± 0.1	X.X° ± 30°				
X.XX ± 0.05	X.XX° ± 15°				
BREAK ALL SHARP EDGES AND REMOVE ALL BURRS		DO NOT SCALE FINISH: BLACK			
DIMENSIONS IN MILLIMETRES		SCALE: 3:2	SIZE: A4	CAD FILE: 55011133000210	

Amphenol		Amphenol Australia Pty.Ltd, 22 Industry Blvd, Carrum Downs, VIC 3201	
TITLE: SP SERIES CONNECTOR LOUDSPEAKER 4 POLE		PART No. REFER TO TABLE	
DRAWING No. 55011133-000-2		SHEET 2/2	