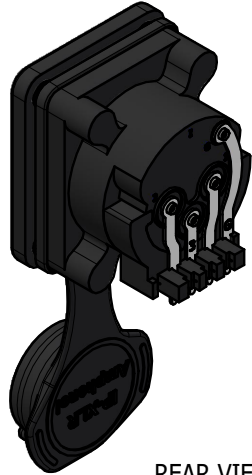
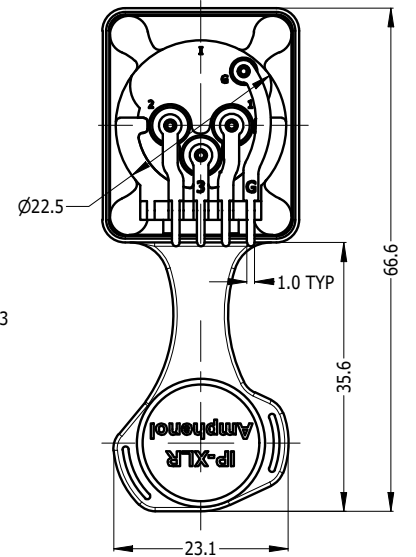
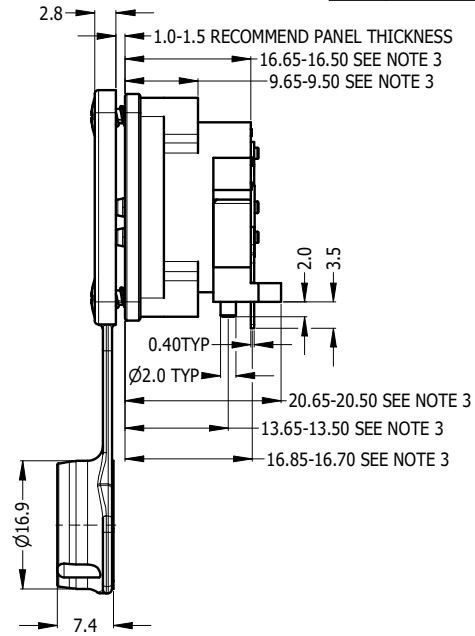
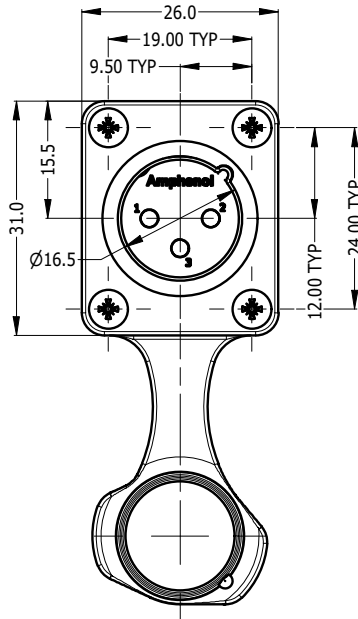




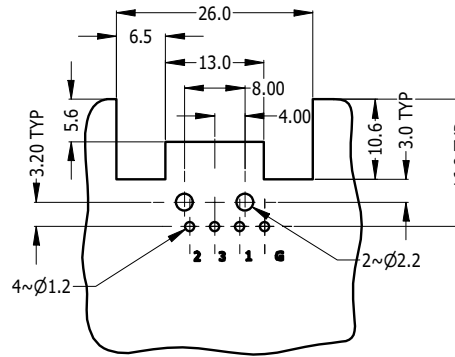
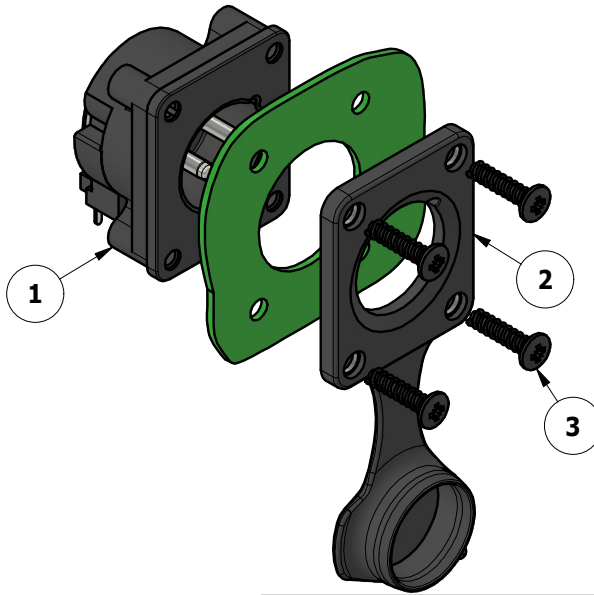
CAPPED VIEW



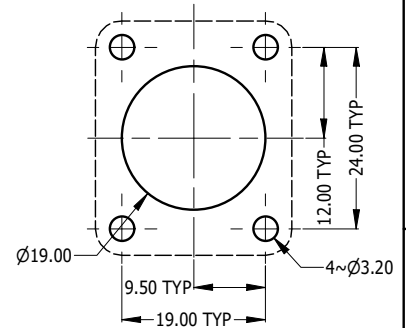
REAR VIEW



RECOMMEND MINIMUM MOUNTING PITCH



RECOMMEND PCB LAYOUT
CONNCTOR SIDE



RECOMMEND PANEL CUT OUT

REVISION HISTORY				
REV	DESCRIPTION	DATE	BY	ECN
1	FIRST ISSUE	11-11-23	MH	----

PART NUMBER	CONTACT FINISH
AXS3MPH	TIN PLATED
AXS3MPH-AU	GOLD PLATED

NOTE:
 1. MATING CONNECTOR SHELL TO HAVE MIN 1.6 SURFACE FINISH TO ACHIEVE IP RATING OF THIS CONNECTOR.
 2. BLACK MOUNTING SCREW 52500011-430 x 4 PCS TO BE SUPPLIED WITH THE CONNECTOR, MAX TORQUE 0.5Nm.
 3. DUE TO 0.4mm THICK RUBBER SEAL, THE DIM WILL VARY DEPENDING ON THE SCREWS TIGHTENING IN ASSEMBLY.

ITEM	PART NUMBER	DESCRIPTION	QTY
3	52500011-430	SCREW 2.9 x 1.06mm USED FOR PLASTIC MATERIAL	4
2	52730035-000	AXS FRONT FLANGE D TYPE RUBBER SEAL IPS4 WITH CAP	1
1	55011501-003/903	AXS3MPH WITHOUT RUBBER FLANGE - TIN/GOLD PLATED CONTACT	1

UNLESS OTHERWISE SPECIFIED TOLERANCE TO BE	
LINEAR	ANGULAR
X ± 0.5	X' ± 1
X.X ± 0.2	X.X' ± 30'
X.XX ± 0.1	X.XX" ± 15'

BREAK ALL SHARP EDGES AND REMOVE ALL BURRS
 DO NOT SCALE

DIMENSIONS IN MILLIMETRES

THIS DOCUMENT IS THE PROPERTY OF AMPHENOL AUSTRALIA PTY. LTD.
 NO PART THEREOF MAY BE REPRODUCED AND USED
 WITHOUT THE PRIOR WRITTEN CONSENT OF THE OWNER

MATERIAL:
SEE COMPONENT

FINISH:
SEE COMPONENT

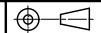
DRN: M.H
 CKD: M.H

APP'D: P.M

DATE: 11-11-23

DATE: 11-11-23

DATE: 11-11-23



THIRD ANGLE PROJECTION

TITLE:
AXS3MPH
AXS PANEL MOUNT SERIES
CUSTOMER DRAWING

SCALE: **1:1**
 SIZE: **A4**

PART No.

SEE TABLE

DRAWING No.

55011501-803-2

SHEET

2/2

Amphenol

Amphenol Australia Pty.Ltd,
 22 Industry Blvd, Carrum Downs, VIC 3201

CAD FILE: 55011501803111